

Serge GS

GS03



By HanDe

Product Certificate

Fire, Smoke Classification	FR (US) - NFPA 701 TM#1 B1(CN) - GB8624	BS (GB) - 5867 Part2 TypeB M1 (F) - NF P 92-507	B1(DE) - DIN4102
Health & Safety	Oeko-tex Standard 100 class IV RoHS Directive (EU)2015/863 AATCC112-2014	Greenguard® Gold EN71 Part 3:1994 GB18586 - 2001	
Bacterial & Fungal Resistance	ASTM G21-15 0 Grade ASTM E 2180-07	None fungi growth Reduce more than 99.9% of bacteria	
Colour fastness to light	Grade 8 ≥4.0	ISO105 B02:2014 AATCC TM 16.3-2014; Option 3; Xenon Arc Lamp	
Warranty	5 Years		



Technical Data

STYLE		Serge GS03
Composition		36% Fibreglass 64% PVC
Openness Factor		≈ 3%
UV Screen		Up to 97%
Width	inch	98"–118"
	cm	250–300
Weight	oz/yd ²	18.13±5%
(ISO 2286–2)	g/m ²	615 ± 5%
Thickness	inch	0.034 ± 5%
(ISO 2286–3)	mm	0.87 ± 5%
Mechanical	Resistance	
Breaking	Warp	≥2500 N/5cm
(ISO 13934–1)	Weft	≥2000 N/5cm
Tear	Warp	≥145 N
(ISO 4674)	Weft	≥135 N
Packing		32.8 yards
(Roll Length)		30 lm

Thermal and Optical Factors

Color	Side	Fabric Properties					Fabric & Glass	
		Thermal			Optical		SHGC % Improvement	SHGC
		Ts	Rs	As	Rv	Tv		

Recommended Comfort Classification				
Thermal Control	Visual			
	Daylight Utilization	Glare Control	Night Privacy	Outward Visibility

Serge GS 3%

0101 White*White	A	20	68	12	73	14	55%	0.20
0102 White*Linen	A	12	62	26	67	9	51%	0.21
	B	12	58	30	60	9	47%	0.23
0105 White*Grey	A	7	47	46	51	5	41%	0.24
	B	7	35	58	37	5	32%	0.28
0503 Grey*Pearl	A							
	B							
0504 Grey*Black	A							
	B							
0505 Grey*Grey	A							
	B							
0509 Grey*Blue	A							
	B							

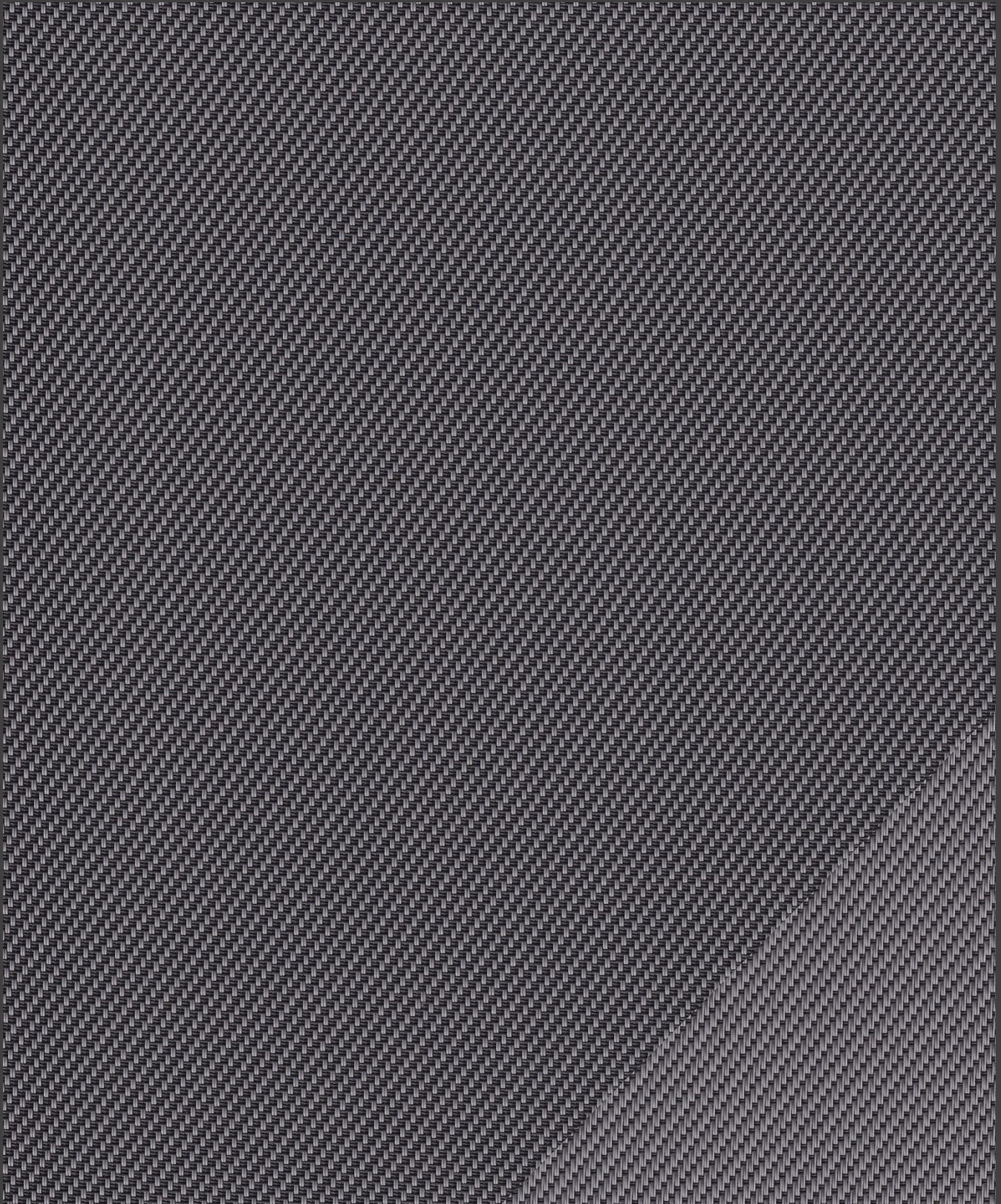
1	2	0	1	1
1	2	0	1	1
1	1	1	2	2

Ts (Solar transmittance): Proportion of solar energy transmitted through the fabric. Rs (Solar reflectance): Proportion of solar radiation reflected by the fabric. As (Solar absorptance): Proportion of solar radiation absorbed by the fabric. Tv (Visible light transmittance): Total percentage of light radiation through the fabric over a wavelength of 380 to 780 nm. Rv (visible light reflectance): Total percentage of light radiation reflected by the fabric over a wavelength of 380 to 780 nm. SHGC (Total solar factor): Solar energy which actually penetrates into a room through the blind and glazing. A low value means good thermal performance.

Comfort Classification According to EN14501 : 0. Very little effect 1. Little effect 2. Moderate effect 3. Good effect 4. Very good effect

Openness Factor

0107 White * Sand

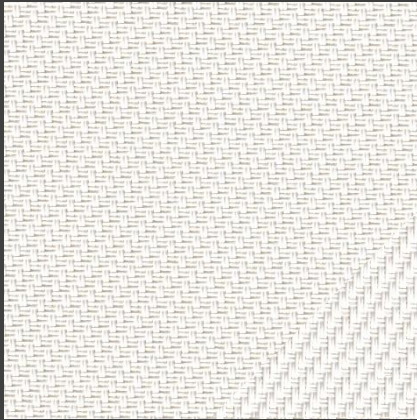


Serge GS 3%

Openness Factor may be slightly different from the actual ones

Colours

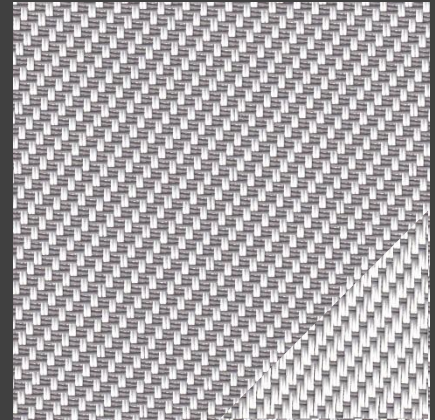
Serge GS 3%



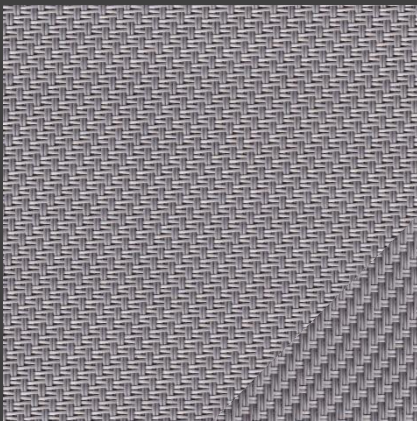
0101 White * White



0102 White * Linen



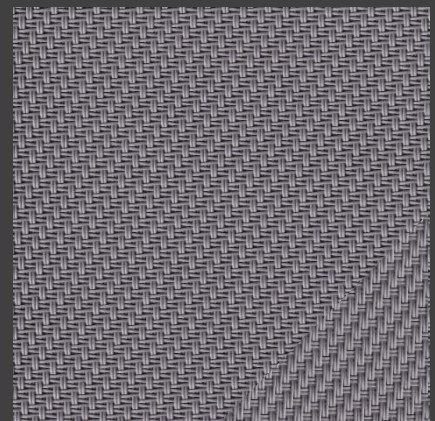
0105 White * Grey



0503 Grey * Pearl



0504 Grey * Black



0505 Grey * Grey



0509 Grey * Blue



HanDe[®]

Hande Manufacturing(China)Co.,Ltd

Add: No.161, Yao TianHe Street,Yong shun Avenue,Yonghe Economic Zone,
GZ Economic&Technological Development District, Guang zhou, China

Tel: 86-20-3222888 Fax: 86-20-3222205 PostCode: 511356

Mail: info@handegroup.com.cn



www.handegroup.com.cn